




Climatic Bulletin

June 2010

 **Max
temperature**

 **Min
temperature**

 **Mean
temperature**

 **Precipitation**

 **Sunshine
duration**



June was "cold" and rainy at the beginning but the temperature increased gradually and a hot wave recorded with its peak at 15-16/6. The rest period characterized by unstable conditions which had as a result rainfalls, strong thunderstorms and hail.



**ΕΘΝΙΚΗ
ΜΕΤΕΩΡΟΛΟΓΙΚΗ
ΥΠΗΡΕΣΙΑ**

HELLENIC NATIONAL METEOROLOGICAL SERVICE



Temperature

First Decameron

Minimum: The values were relatively low over mainland for the first four days.

Some of the lowest:

7.4°C in Kastoria at 3/6 and 10°C in Kozani at 5/6.

Maximum: High values recorded at the end.

More specific:

32.4°C in Serres, 31.6°C in Trikala at 9/6.

Second Decameron

Minimum: The values increased in the middle of the period.

E.g: 19.8°C in Konitsa and 17.6°C in Kastoria at 16/6.

Maximum: High values between 15/6 and 17/6.

More specific:

40.4°C in N.Filadelfia and 41.2°C in Argos at 16/6, 41°C in Ierapetra at 17/6.

Third Decameron

Minimum: The values decreased mainly over Northwestern parts.

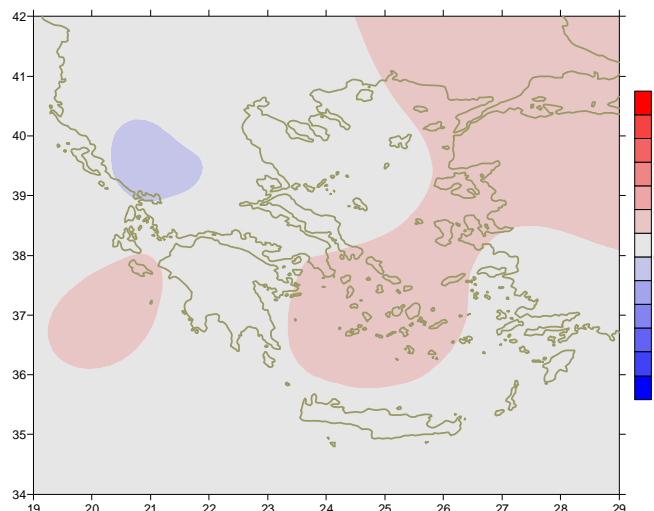
More specific:

11.2°C in Kastoria at 24/6 and 12.4°C in Ioannina at 25/6.

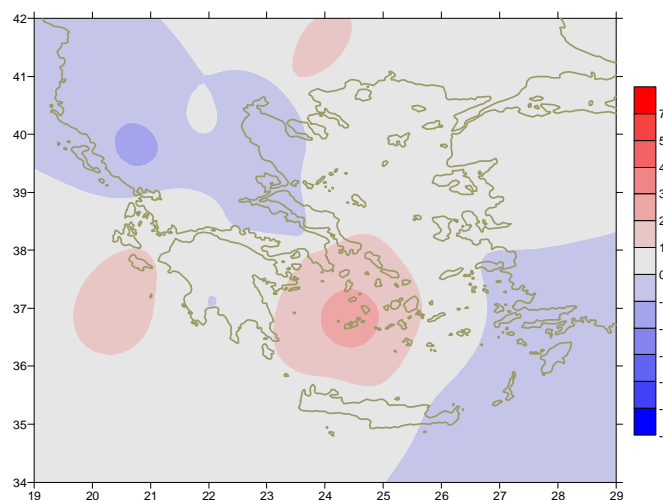
Maximum: the values exceeded 30°C the first day.

For example:

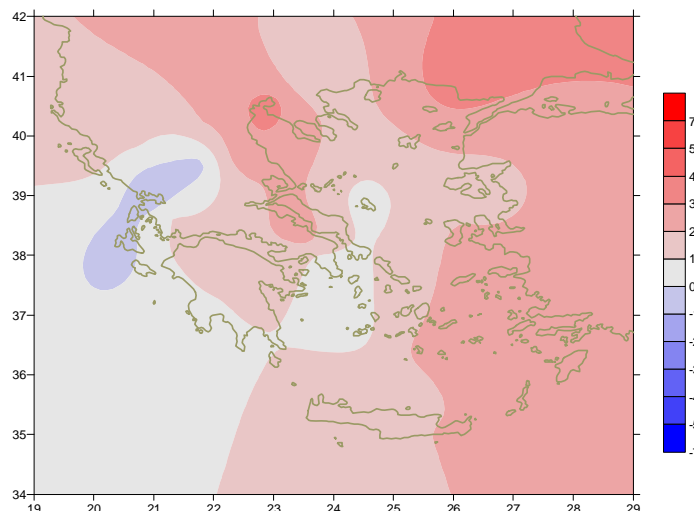
32.4°C in Tanagra and 34°C in Astros at 21/6.



Deviation of mean temperature from normal values



Deviation of maximum temperature from normal values



Deviation of minimum temperature from normal values



Precipitation

First Decameron

Relatively high precipitation recorded in the middle of the

Period. More specific:

44mm in Trikala,

36mm in Syros, 20mm in Mykonos at 5/6.

Second Decameron

Remarkable rainfalls and local thunderstorms recorded at the end of the period mainly over mainland.

More specific:

23mm in Thessaloniki (18/6),

32mm in Kastoria (19/6),

17mm in Skyros (19/6).

Third Decameron

Rainy period.

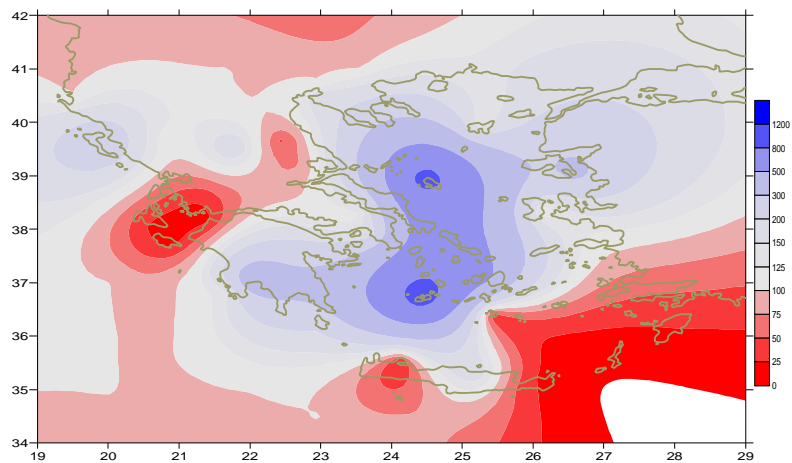
More specific:

15mm in Ioannina 21/6,

9mm in Chios at 23/6,

11mm in Velo at 25/6,

14mm in Tripoli at 29/6.



Deviation of monthly precipitation height from normal values (%)

TABLE OF MEAN VALUES

STATION	Longitude	Latitude	Tmean	TX	TN	RR	INST
SERRES	23,53	41,07	24,6	30,7	17,2	41	245
FLORINA	21,40	40,78					
KASTORIA	21,27	40,45	21,1	26,3	12,6	55	241
TRIKALA_IMATHIAS	22,55	40,60	24,6	29,9	17,8	34	276
THESSALONIKI	22,97	40,52	24,5	28,1	19,4	55	291
CHRYSOUPOLI	24,62	40,92	23,6	27,1	18,3	33	225
ALEXANDROUPOLI	25,95	40,85	24,4	27,8	18,4	46	273
KOZANI	21,83	40,28	22	26,5	15	40	
KERKYRA	19,92	39,62	24,2	27,5	17,9	41	314
IOANNINA	20,82	39,70	21,2	26	13,5	51	248
PREVEZA	20,76	38,91	23,8	27,3	18,6	8	
TRIKALA_THESSALIAS	21,77	39,52	25,2	30,6	17	56	
LARISA	22,45	39,65	25,7	30,8	17,6	10	278
LIMNOS	25,23	39,92	24,1	27	18,7	30	296
ARTA	21,00	39,17	23,6	28,8	16,4	23	295
AGHIALOS	22,78	39,21	25,1	28,8	18,1	17	288
MYTILINI	26,60	39,05	25,7	29,2	20,6	20	324
VELO	22,77	37,97	25,6	30	17,3	27	306
AGRINIO	21,35	38,60	25	30,9	16,5	8	331
LAMIA	22,43	38,87	25,9	32	18,5	22	247
ANDRAVIDA	21,28	37,92	24,1	27,6	17,1	2	331
SKYROS	24,48	38,96	24,2	26,9	19,9	48	252
ARGOSTOLI	20,50	38,12	24	27,1	18,1	6	347
ARAXOS	21,42	38,15	24,5	28,2	17,7	2	287
TANAGRA	23,57	38,33	25,5	29,8	17,9	18	290
HIOS	26,13	38,35	25,1	27,6	19,4	16	315
PYRGOS	21,42	37,67	24,7	28,4	17,2	8	294
TRIPOLI	22,40	37,52	22,2	27,8	13,5	66	285
TATOI	23,78	38,10	24,8	28,1	18,2	22	
HELLINIKO	23,73	37,90	26,1	29,6	20,7	11	308
ELEYSINA	23,55	38,07	26,5	30,1	20,8	7	
ZAKYNTHOS	20,88	37,75	25,5	29,2	18,4	1	336
SAMOS	26,92	37,68	26	29,3	21,1	3	336
ARGOS	22,75	37,63					
KALAMATA	22,02	37,07	24,2	28,7	16,6	27	317
NAXOS	25,37	37,10	24,6	27,1	21	15	355
METHONI	21,70	36,82	23,2	26,1	19	5	335
MHLOS	24,43	36,73	25,5	29,9	20,5	32	
SPATA	23,95	37,95	25,2	28	17,9	18	
KOS	27,08	36,80	24,6	27,7	21,1	0	
KYTHIRA	22,98	36,15					
SANTORINI	25,41	36,41	25	27,7	21,8	0	347
SOUDA	24,12	35,55	25,1	29,3	20,2	1	342
RODOS	28,08	36,40	25,6	28	22,4	0	354
MYKONOS	25,35	37,43	24,5	27,7	21	25	
HERAKLEIO	25,18	35,33	24,8	28	20,2	6	355
IERAPETRA	25,73	35,02	25,9	29,1	21,4	2	328
SITEIA	26,10	35,21	24,4	27,1	21,4	0	355
RETHYMNO	24,50	35,36					
TYMPAKI	24,76	35,06	25	28,5	18,7	2	314
KASTELI	25,33	35,18	24	28,5	17,4	8	303
KARPATOS	27,15	35,42	24,6	27,4	21,7	0	
PAROS	25,13	37,02					
SYROS	24,95	37,42	24,7	27,4	20,7	45	340
IKARIA	26,35	37,68	24,1	25,7	22,6	13	

Climatic Bulletin

General Description

Precipitation amounts were higher than normal values over Central-Southern Aegean.
In parallel, over most mainland and few parts of Ionian sea they varied close to normal levels.
The mean temperature varied slightly higher than normal values everywhere, except northwestern mainland.

Climatic Parameters :

- ❖ **Normal Values** : normal values for various parameters (temperature, precipitation, etc) are defined as mean values calculated for 30 years. These normal values are used as basis and represent the mean situation. They can be specified in 10 daily, monthly, seasonally and yearly level and are used for the trend comparison of 10 days, month, season or year as: rainy decameron, mild winter, cool August etc.

Measurement :

- ❖ **Precipitation**
1 mm = 1 litre/m²

Table Legend :

T_{mean} : Mean Temperature
T_N : Minimum Temperature
T_X : Maximum Temperature
RR : Precipitation height(mm)
INST : Sun Duration (hours)

UTC hours (Universal Time Coordinates) in Greece :

- ❖ Winter : UTC hour = local hour - 2
- ❖ Summer : UTC hour = local hour - 3

©Hellenic National Meteorological Service
Reproduction is prohibited without written authorization
14 El.Venizelou 16777
Helliniko, Athens
Greece