



# Climatic Bulletin

November 2017

 **Max  
temperature**

 **Min  
temperature**

 **Mean  
temperature**

 **Precipitation**

 **Sunshine  
duration**

November characterized by the accumulation of high precipitation amounts in a very short time. This fact, in combination with ground parameters, caused locally catastrophic floods.

Without a doubt the most significant flood episode took place in Mandra- New Peramos (western Attica) at 15/11 because of the lost of many human lives.

Meanwhile great damages recorded over Argos-Nafplio (8/11), over Kerkira (11/11), over Simi (13/11), over Thessaly and Central Macedonia (15-17/11) close to the Pinios and the Aliakmonas basins.



ΕΘΝΙΚΗ  
**ΜΕΤΕΩΡΟΛΟΓΙΚΗ**  
ΥΠΗΡΕΣΙΑ

HELLENIC NATIONAL METEOROLOGICAL SERVICE



# Temperature

### First 10-day period

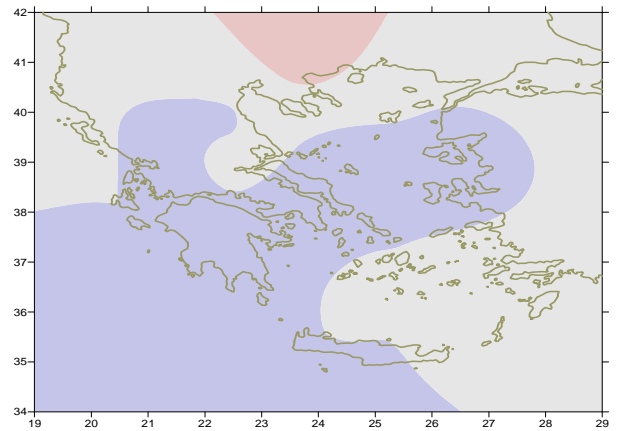
More specific (varied) :

**Minimum:**

from -6°C to 11°C over north mainland,  
from -2°C to 15°C over central mainland,  
from 3°C to 18°C over rest parts.

**Maximum:**

from 11°C to 18°C over north mainland,  
from 13°C to 24°C over central mainland,  
from 15°C to 20°C over rest parts.



*Deviation of mean temperature from normal values*

### Second 10-day period

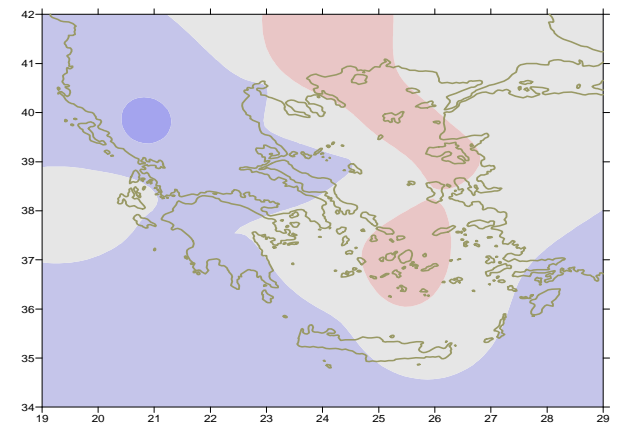
More specific (varied) :

**Minimum:**

from 2°C to 15°C over north mainland,  
from 6°C to 17°C over central mainland,  
from 10°C to 19°C over rest parts.

**Maximum:**

from 8°C to 21°C over north mainland,  
from 11°C to 24°C over central mainland,  
from 12°C to 22°C over rest parts.



*Deviation of maximum temperature from normal values*

### Third 10-day period

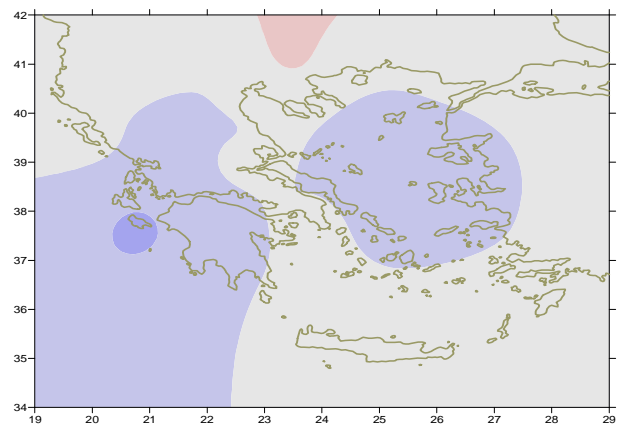
More specific (varied) :

**Minimum:**

from -5°C to 10°C over north mainland,  
From -3°C to 13°C over central mainland,  
from 5°C to 15°C over rest parts.

**Maximum:**

from 7°C to 17°C over north mainland,  
from 11°C to 21°C over central mainland,  
From 8°C to 20°C over rest parts.



*Deviation of minimum temperature from normal values*



## Precipitation

### First 10-day period

Locally significant precipitation.

More specific:

86mm in *Strofades (1/11)*,  
34mm in *Fourni*, 94mm in *Konitsa (11/11)*, 56mm in *Kerkyra (11/11)*,  
107.5mm in *Argos*, 60mm in *Messologi*, 56mm in *Kerkira*,  
31mm in *Ioannina*, 29mm in *Kalamata*, 22mm in *Adravida (8/11)*.

### Second 10-day period

Locally significant (accumulated in short time) precipitation.

More specific:

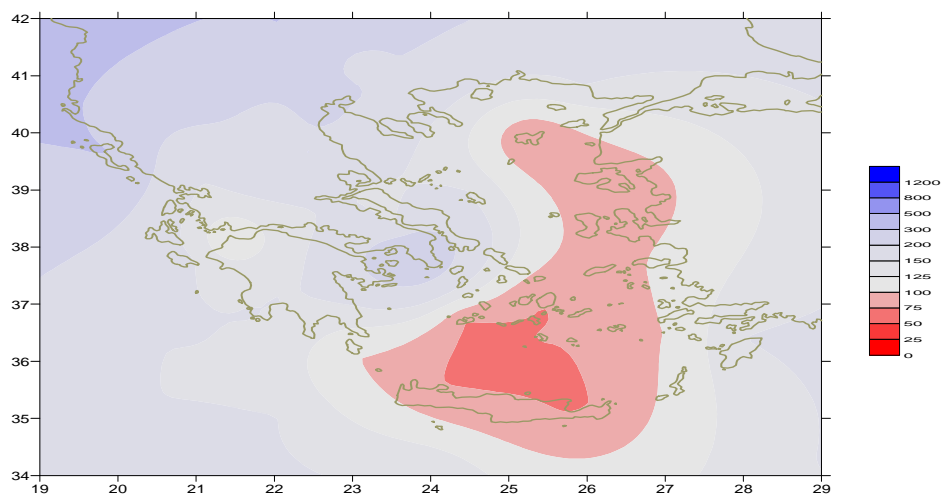
100mm in *Fourni*, 94mm in *Kerkira*, 68mm in *Konitsa (11/11)*,  
40mm in *Samos*, 22mm in *Simi*, 22mm in *Rodos*, 21mm in *Kos (13/11)*,  
84mm in *Kerkira*, 40mm in *Argostoli (14/11)*,  
60mm in *Mandra (west Attica)*, 46mm in *Zakinthos*, 26mm in *Larisa*,  
49mm in *Andravida*, 42mm in *Argostoli*, 44mm in *Kalamata (15/11)*,  
35mm in *Elefsina*, 77mm in *Argostoli (16/11)*,  
50mm in *Kraneia*, 46mm in *Elefsina*, 34mm in *Tatoi*, 46mm in *N.Filadelfia (17/11)*,  
35mm in *Samos*, 32mm in *Chios (18/11)*,  
96mm in *Drama*, 96mm in *Hellinikon (19/11)*,  
25mm in *Alexandroupoli*, 21mm in *Rodos (20/11)*.

### Third 10-day period

Locally significant precipitation.

More specific:

30mm in *Ormenio*, 27mm in *Chrissoupoli*, 34mm in *Preveza*,  
23mm in *Thessaloniki*, 23mm in *Kimi*, 33mm in *Mitilini*,  
39mm in *Kalamata (27/11)*,  
28mm in *Xanthi (28/11)*,  
47mm in *Ioannina (30/11)*.



*Deviation of monthly precipitation height from normal values (%)*

TABLE OF MEAN VALUES

STATION	Longitude	Latitude	Tmean	TX	TN	RR	INST
SERRES	23,53	41,07	10	15,6	5,5	89	105
FLORINA	21,40	40,78					
KASTORIA	21,27	40,45	8,1	13,3	2,9	142	108
TRIKALA_IMATHIAS	22,55	40,60					
THESSALONIKI	22,97	40,52	11,1	15,3	7,3	73	119
CHRYSOUPOLI	24,62	40,92	11,1	15,3	7,1	77	113
ALEXANDROUPOLI	25,95	40,85	11,2	15,5	7,2	76	135
KOZANI	21,83	40,28	8	12,6	3,9	79	
KERKYRA	19,92	39,62	14,5	18,4	10,4	439	119
IOANNINA	20,82	39,70	9,5	14,4	4,5	226	99
PREVEZA	20,76	38,91	14,8	18,2	11,4	186	
TRIKALA_THESSALIAS	21,77	39,52					
LARISA	22,45	39,65	10,7	16	5,4	85	108
LIMNOS	25,23	39,92	12,4	16,9	8,5	49	152
ARTA	21,00	39,17					
AGHIALOS	22,78	39,21	12,1	16,8	8,5	75	135
MYTILINI	26,60	39,05	14,3	18,4	11,2	80	172
VELO	22,77	37,97					
AGRINIO	21,35	38,60					
LAMIA	22,43	38,87					
ANDRAVIDA	21,28	37,92	14,3	19	10,4	191	149
SKYROS	24,48	38,96	14	17,1	11,4	63	152
ARGOSTOLI	20,50	38,12	15,7	19,3	11,7	270	154
ARAXOS	21,42	38,15	14,2	18,7	10	95	169
TANAGRA	23,57	38,33	12,2	17,2	7,9	83	140
HIOS	26,13	38,35	13,5	18,1	9,7	75	170
PYRGOS	21,42	37,67					
TRIPOLI	22,40	37,52	9,9	15,5	4,4	84	153
TATOI	23,78	38,10	12,2	17,4	8,2	98	
HELLINIKO	23,73	37,90	15,5	19,5	12,5	106	172
ELEYSINA	23,55	38,07	14,4	18,6	10,5	194	
ZAKYNTHOS	20,88	37,75	15	18,8	11,2	250	148
SAMOS	26,92	37,68	14,2	18,5	10,5	115	
ARGOS	22,75	37,63					
KALAMATA	22,02	37,07	14	19,8	9,4	167	165
NAXOS	25,37	37,10	16,3	20	13	33	176
METHONI	21,70	36,82					
MHLOS	24,43	36,73					
SPATA	23,95	37,95	14,6	18,3	8,2	72	
KOS	27,08	36,80	15,1	18,3	12,4	54	
KYTHIRA	22,98	36,15					
SANTORINI	25,41	36,41	16,4	19,3	13,6	27	180
SOUDA	24,12	35,55	15,6	19,3	12,5	41	176
RODOS	28,08	36,40	16,6	19,6	14	107	190
MYKONOS	25,35	37,43	15,3	17,8	14,1	42	
HRAKLEIO	25,18	35,33	16,5	20,4	13,4	18	176
IERAPETRA	25,73	35,02					
SITEIA	26,10	35,21					
RETHYMNO	24,50	35,36					
TYMPAKI	24,76	35,06					
KASTELI	25,33	35,18	13,9	18,4	9,7	21	186
KARPATOS	27,15	35,42	17,6	20	15,7	35	
PAROS	25,13	37,02	16	19,1	14	27	169
SYROS	24,95	37,42					
IKARIA	26,35	37,68					

**TABLE OF DEVIATIONS  
FROM NORMAL VALUES**

STATION	TMEAN ( deviation) (I)	PRECI (deviation % ) (II)
SERRES	0.9	166
FLORINA		
THESSALONIKI	0.2	127
ALEXANDROUPOLI	0.2	100
KOZANI	0	132
KERKYRA	0.3	243
IOANNINA	-0.2	137
LARISA	-0.1	146
LIMNOS	0.1	65
AGHIALOS	0	119
MYTILINI	-0.2	85
AGRINIO		
SKYROS	-0.7	117
ARGOSTOLI	0	167
ARAXOS	-0.4	72
HIOS	-0.3	91
HELLINIKO	0.1	209
ZAKYNTHOS	-0.8	157
SAMOS	-0.3	104
KALAMATA	-0.7	118
NAXOS	0.1	70
METHONI		
SANTORINI	1	50
SOUDA	0	56
RODOS	0.2	121
HERAKLIO	-0.1	31
SITIA		

(I) deviation of mean temperature from normal values  
 (II) deviation of monthly precipitation height from normal values %.

# Climatic Bulletin

## General Description

Precipitation amounts were higher enough than normals over Ionian area and mainland while they were lower enough over Aegean area. The mean temperature varied close to normal values almost everywhere.

### Climatic Parameters :

- ❖ **Normal Values** : normal values for various parameters (temperature, precipitation, etc) are defined as mean values calculated for 30 years. These normal values are used as basis and represent the mean situation. They can be specified in 10 daily, monthly, seasonally and yearly level and are used for the trend comparison of 10 days, month, season or year as: rainy decameron, mild winter, cool August etc.

### Measurement :

- ❖ **Precipitation**  
1 mm = 1 litre/m<sup>2</sup>

### Table Legend :

Tmean : Mean Temperature  
 TN : Minimum Temperature  
 TX : Maximum Temperature  
 RR : Precipitation height(mm)  
 INST : Sun Duration (hours)

### UTC hours (Universal Time Coordinates) in Greece :

- ❖ Winter : UTC hour = local hour - 2
- ❖ Summer : UTC hour = local hour - 3

© Hellenic National Meteorological Service  
 Reproduction is prohibited without written authorization  
 14 El.Venizelou 16777  
 Helliniko, Athens  
 Greece