




Climatic Bulletin

October 2017

 **Max
temperature**

 **Min
temperature**

 **Mean
temperature**

 **Precipitation**

 **Sunshine
duration**

October started with relatively high temperature values but came to a "cold" end. Although local significant rainfalls recorded during the first ten days, the next period till 22/10 characterized by lack of precipitation. In contrast heavy rainfalls and thunderstorms affected most parts between 23-27/10 which caused local damages over central and southern parts.



ΕΘΝΙΚΗ
ΜΕΤΕΩΡΟΛΟΓΙΚΗ
ΥΠΗΡΕΣΙΑ
HELLENIC NATIONAL METEOROLOGICAL SERVICE



Temperature

First 10-day period

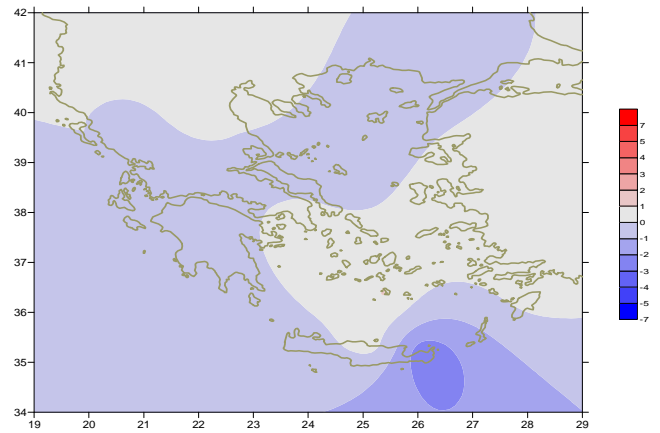
More specific (varied) :

Minimum:

from 3°C to 14°C over north mainland,
 from 5°C to 18°C over central mainland,
 from 8°C to 20°C over rest parts.

Maximum:

from 10°C to 29°C over north mainland,
 from 12°C to 31°C over central mainland,
 from 14°C to 28°C over rest parts.



Deviation of mean temperature from normal values

Second 10-day period

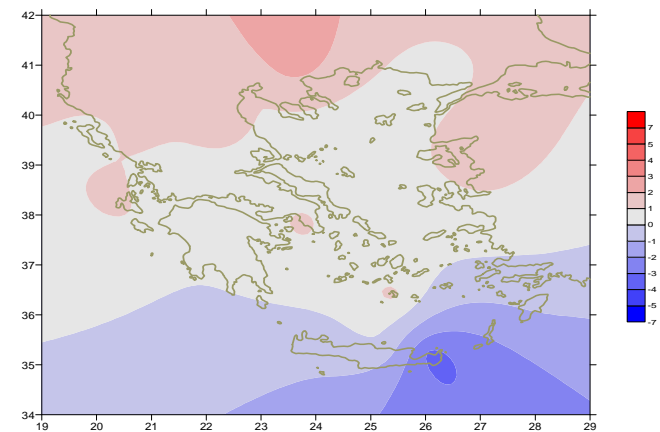
More specific (varied) :

Minimum:

from 5°C to 12°C over north mainland,
 from 7°C to 17°C over central mainland,
 from 10°C to 18°C over rest parts.

Maximum:

from 21°C to 29°C over north mainland,
 from 21°C to 29°C over central mainland,
 from 22°C to 26°C over rest parts.



Deviation of maximum temperature from normal values

Third 10-day period

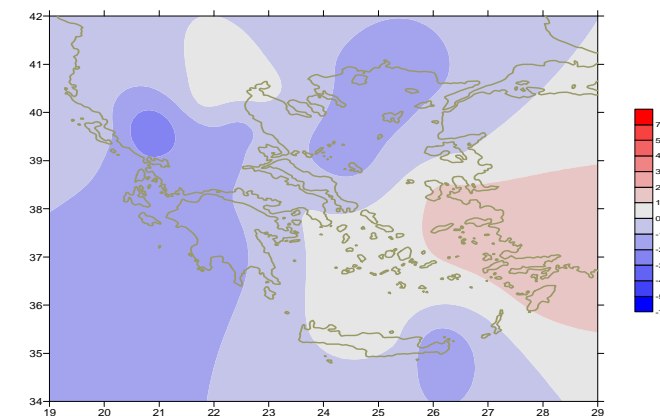
More specific (varied) :

Minimum:

from -4°C to 13°C over north mainland,
 From 2°C to 16°C over central mainland,
 from 8°C to 19°C over rest parts.

Maximum:

from 11°C to 28°C over north mainland,
 from 16°C to 27°C over central mainland,
 From 17°C to 27°C over rest parts.



Deviation of minimum temperature from normal values



Precipitation

First 10-day period

Locally significant precipitation.

More specific:

*21mm in Limnos, 80mm in Skiathos, 11mm in Tanagra (1/10),
15mm in Thessaloniki, 24mm in Kerkyra, 13mm in Skyros,
19mm in Kos, 12mm in Santorini, 14mm in Souda, 26mm in Rodos (3/10),
11mm in Serres, 11mm in Florina, 43mm in Alexandroupoli,
12mm in Aghialos, 16mm in Konitsa, 14mm in Limnos (7/10),
13mm in Chios (8/10).*

Second 10-day period

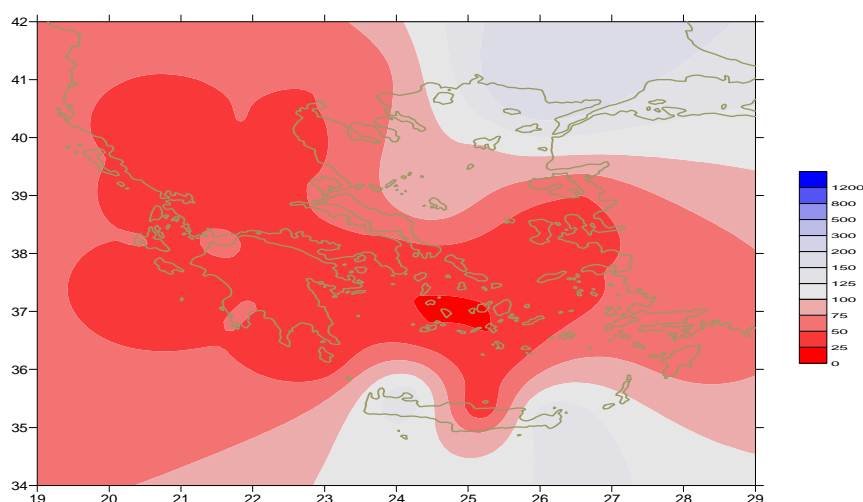
Luck of precipitation almost everywhere.

Third 10-day period

Locally significant precipitation.

More specific:

*15mm in Kastoria, 17mm in Konitsa, 34mm in Preveza,
21mm in Adravidia, 22mm in Araxos, 20mm in Kalamata (23/10),
52mm in Alexandroupoli, 15mm in Serres, 30mm in Limnos,
25mm in Mitilini, 23mm in Samos, 22mm in Rodos (24/10),
17mm in Aghialos,
23mm in Skiathos, 44mm in Skyros, 19mm in Kalimnos (25/10),
24mm in Chrissoupoli, 15mm in Preveza (28/10),
26mm in Kos (29/10),
15mm in Astros, 14mm in Kalamata (31/10).*



*Deviation of monthly precipitation height from
normal values (%)*

TABLE OF MEAN VALUES

STATION	Longitude	Latitude	Tmean	TX	TN	RR	INST
SERRES	23,53	41,07	16	23.7	8.4	36	225
FLORINA	21,40	40,78					
KASTORIA	21,27	40,45	13.4	20.8	5.5	26	238
TRIKALA_IMATHIAS	22,55	40,60					
THESSALONIKI	22,97	40,52	16.8	22.2	11.1	21	252
CHRYSOUPOLI	24,62	40,92	15.5	20.8	10.1	52	239
ALEXANDROUPOLI	25,95	40,85	14.8	20.8	8.9	142	238
KOZANI	21,83	40,28	13.9	19.9	8.4	18	
KERKYRA	19,92	39,62	18.4	24.1	13.1	26	246
IOANNINA	20,82	39,70	14.5	22.5	5.4	7	208
PREVEZA	20,76	38,91					
TRIKALA_THESSALIAS	21,77	39,52					
LARISA	22,45	39,65	16.3	23.6	8.4	12	181
LIMNOS	25,23	39,92	15.8	20.5	11.2	85	240
ARTA	21,00	39,17					
AGHIALOS	22,78	39,21	16.3	21.9	11.3	46	236
MYTILINI	26,60	39,05	18.7	23.2	14.7	34	253
VELO	22,77	37,97					
AGRINIO	21,35	38,60					
LAMIA	22,43	38,87					
ANDRAVIDA	21,28	37,92	17.8	23.8	11.8	34	255
SKYROS	24,48	38,96	17.4	20.5	13.9	74	250
ARGOSTOLI	20,50	38,12	19.2	23.8	14.6	30	266
ARAXOS	21,42	38,15	18.4	23.7	12.9	55	252
TANAGRA	23,57	38,33	17	22.8	10.7	30	236
HIOS	26,13	38,35	18.3	21.7	14.7	20	256
PYRGOS	21,42	37,67					
TRIPOLI	22,40	37,52					
TATOI	23,78	38,10	16.9	22.5	11	8	
HELLINIKO	23,73	37,90	19.7	24.2	15.6	4	247
ELEYSINA	23,55	38,07	19.6	24.2	14.2	8	
ZAKYNTHOS	20,88	37,75	18.9	23.5	13.7	13	254
SAMOS	26,92	37,68	19.7	23.4	16.5	46	
ARGOS	22,75	37,63					
KALAMATA	22,02	37,07	18.2	24.7	11.4	47	251
NAXOS	25,37	37,10	19.5	21.7	17.3	4	241
METHONI	21,70	36,82					
MHLOS	24,43	36,73					
SPATA	23,95	37,95	18.7	22.7	11.8	9	
KOS	27,08	36,80	19.5	22.5	16.6	34	
KYTHIRA	22,98	36,15					
SANTORINI	25,41	36,41	20	22.8	17.2	7	266
SOUDA	24,12	35,55	18.7	22.5	15.3	28	232
RODOS	28,08	36,40	21.1	23.8	18.6	47	232
MYKONOS	25,35	37,43	18.7	21.4	16.9	6	
HRAKLEIO	25,18	35,33	20.2	22.9	16.9	11	214
IERAPETRA	25,73	35,02					
SITEIA	26,10	35,21	17.4	20.2	14.8	112	212
RETHYMNO	24,50	35,36					
TYMPAKI	24,76	35,06					
KASTEI	25,33	35,18	17.5	21.6	13	14	222
KARPATOS	27,15	35,42	21.3	23.8	19.3	17	
PAROS	25,13	37,02	19.1	22	17	5	248
SYROS	24,95	37,42					
IKARIA	26,35	37,68					

**TABLE OF DEVIATIONS
FROM NORMAL VALUES**

STATION	TMEAN (deviation) (I)	PRECI (deviation %) (II)
SERRES	0.6	82
FLORINA		
THESSALONIKI	0.7	52
ALEXANDROUPOLI	-0.7	281
KOZANI	0.5	36
KERKYRA	0	18
IOANNINA	-0.4	7
LARISA	0.2	26
LIMNOS	-0.8	237
AGHIALOS	-0.4	71
MYTILINI	0.4	89
AGRINIO		
SKYROS	-0.7	191
ARGOSTOLI	-0.5	28
ARAXOS	-0.5	64
HIOS	0.3	54
HELLINIKO	0.4	8
ZAKYNTHOS	-0.7	9
SAMOS	0.5	159
KALAMATA	-0.6	47
NAXOS	0.2	10
METHONI		
SANTORINI	1.1	24
SOUDA	-0.3	35
RODOS	0.5	73
HERAKLIO	0.3	16
SITIA	-2.7	195

(I) deviation of mean temperature from normal values
 (II) deviation of monthly precipitation height from normal values %.

Climatic Bulletin

General Description

Precipitation amounts were lower enough than normals with the exception of the eastern parts of Macedonia, Thrace, Evia and Creta island.
The mean temperature varied close to normal values almost everywhere.

Climatic Parameters :

- ❖ **Normal Values** : normal values for various parameters (temperature, precipitation, etc) are defined as mean values calculated for 30 years. These normal values are used as basis and represent the mean situation. They can be specified in 10 daily, monthly, seasonally and yearly level and are used for the trend comparison of 10 days, month, season or year as: rainy decameron, mild winter, cool August etc.

Measurement :

- ❖ **Precipitation**
1 mm = 1 litre/m²

Table Legend :

Tmean : Mean Temperature
TN : Minimum Temperature
TX : Maximum Temperature
RR : Precipitation height(mm)
INST : Sun Duration (hours)

UTC hours (Universal Time Coordinates) in Greece :

- ❖ Winter : UTC hour = local hour - 2
- ❖ Summer : UTC hour = local hour - 3

© Hellenic National Meteorological Service
Reproduction is prohibited without written authorization
14 El.Venizelou 16777
Helliniko, Athens
Greece