



Climatic Bulletin

February 2017

 **Max
temperature**

 **Min
temperature**

 **Mean
temperature**

 **Precipitation**

 **Sunshine
duration**

February characterized by remarkable temporal rainfalls in specific parts. Meanwhile strong phenomena recorded mainly over the southern Greece (11/2) and the northwestern parts as well (19-20/2). Also, because of the frequent South winds, the mean temperature varied higher than normal values while dust episodes occurred.



ΕΘΝΙΚΗ
ΜΕΤΕΩΡΟΛΟΓΙΚΗ
ΥΠΗΡΕΣΙΑ

HELLENIC NATIONAL METEOROLOGICAL SERVICE



Temperature

First 10-day period

More specific (varied) :

Minimum:

from -5°C to 12°C over north mainland,
 from -3°C to 11°C over central mainland,
 from 1°C to 15°C over rest parts.

Maximum:

from 3°C to 18°C over north mainland,
 from 9°C to 22°C over central mainland,
 from 11°C to 18°C over rest parts.

Second 10-day period

More specific (varied) :

Minimum:

from -5°C to 7°C over north mainland,
 from -7°C to 11°C over central mainland,
 from 2°C to 12°C over rest parts.

Maximum:

from 5°C to 16°C over north mainland,
 from 9°C to 20°C over central mainland,
 from 6°C to 18°C over rest parts.

Third 10-day period

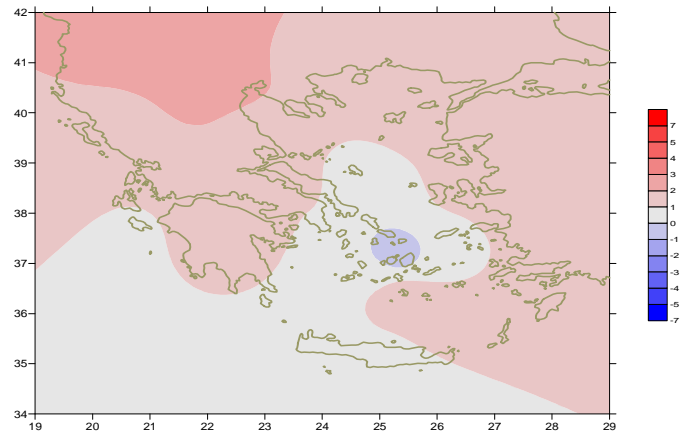
More specific (varied) :

Minimum:

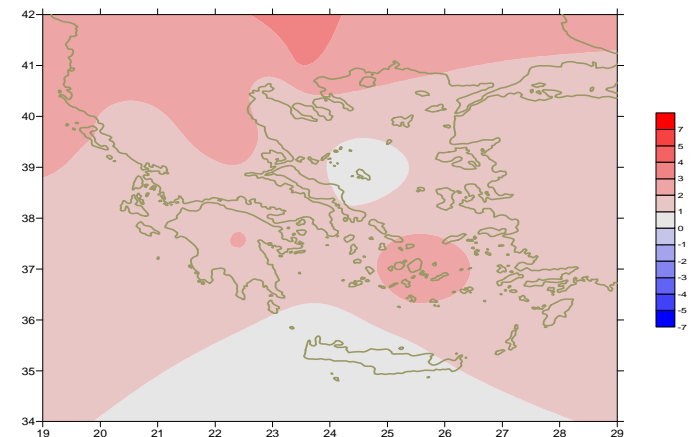
from -4°C to 9°C over north mainland,
 From -2°C to 11°C over central mainland,
 from 1°C to 14°C over rest parts.

Maximum:

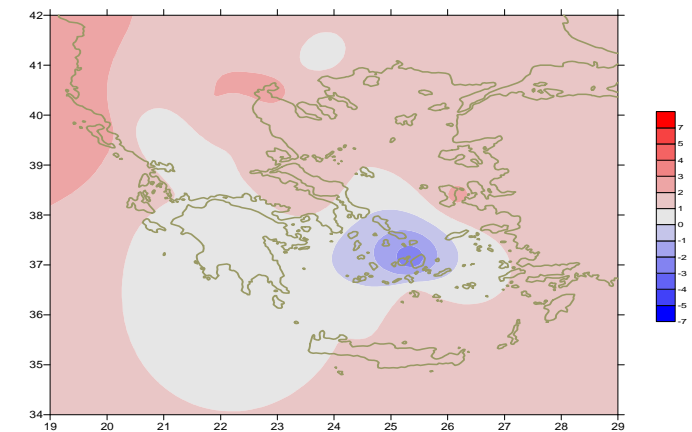
from 8°C to 18°C over north mainland,
 from 12°C to 22°C over central mainland,
 From 15°C to 22°C over rest parts.



Deviation of mean temperature from normal values



Deviation of maximum temperature from normal values



Deviation of minimum temperature from normal values



Precipitation

First 10-day period

Remarkable local precipitation.

More specific:

*16mm in Konitsa, 13mm in Preveza (6/2),
13mm in Serres, 17mm in Crissoupoli,
20mm in Alexandroupoli, 24mm in Kerkyra, 38mm in Limnos,
19mm in Dsfina, 15mm in Tanagra, 39mm in Tatoi,
11mm in Elefsina, 11mm in Methoni (7/2),*

15mm in Limnos, 11mm in Skyros, 18mm in Karpathos (8/2),

51mm in Souda (10/2).

Second 10-day period

Significant local precipitation.

More specific:

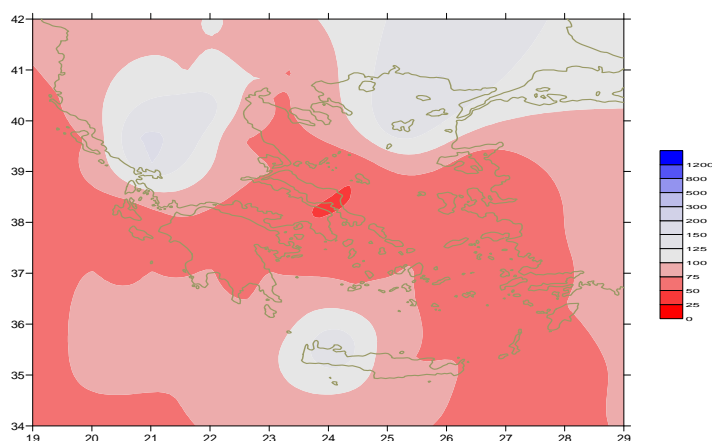
*22mm in Sandorini, 69mm in Souda, 13mm in Karpathos (11 /2),
25mm in Syros (13/2),
11mm in Thessaloniki, 11mm in Alexandroupoli,
15mm in Kozani, 31mm in Ioannina, 32mm in Preveza,
12mm in Chios (19/2),
16mm in Alexandroupoli, 7mm in Limnos,
7mm in Mitilini, 12mm in Desfina (20/2).*

Third 10-day period

Significant precipitation locally at the end of the period.

More specific:

*8mm in Mitilini, 23mm in Methoni (25/2),
5mm in Kastoria, 4mm in Alexandroupoli, 3mm in Tanagra,
41mm in Mitilini, 18mm in Samos, 36mm in Mikonos,
3mm in Elefsina (26/2),
28mm in Tatoi, 3mm in Spata, 2mm in Mikonos (27/2).*



*Deviation of monthly precipitation
height from normal values (%)*

TABLE OF MEAN VALUES

STATION	Longitude	Latitude	Tmean	TX	TN	RR	INST
SERRES	23,53	41,07	8	13,8	2,3	30	115
FLORINA	21,40	40,78					
KASTORIA	21,27	40,45	5,8	11,3	0,1	20	119
TRIKALA_IMATHIAS	22,55	40,60					
THESSALONIKI	22,97	40,52	8,8	12,4	4,6	24	120
CHRYSOUPOLI	24,62	40,92	7,4	11,6	3	44	149
ALEXANDROUPOLI	25,95	40,85	7,4	11,6	3,3	55	146
KOZANI	21,83	40,28	6,3	10,8	1,5	30	
KERKYRA	19,92	39,62	12,1	16,2	8,2	52	121
IOANNINA	20,82	39,70	7,5	13,1	1,4	50	114
PREVEZA	20,76	38,91	11,6	15,6	8,1	59	
TRIKALA_THESSALIAS	21,77	39,52					
LARISA	22,45	39,65	8,4	14,1	2,6	24	128
LIMNOS	25,23	39,92	9,3	12,3	6,2	63	131
ARTA	21,00	39,17					
AGHIALOS	22,78	39,21					
MYTILINI	26,60	39,05	10,9	13,9	8,2	36	143
VELO	22,77	37,97					
AGRINIO	21,35	38,60					
LAMIA	22,43	38,87					
ANDRAVIDA	21,28	37,92	11,2	16	6,7	36	169
SKYROS	24,48	38,96	10,8	12,9	8,7	23	110
ARGOSTOLI	20,50	38,12	12,7	16,3	10,2	16	151
ARAXOS	21,42	38,15	11,8	15,6	7,5	42	171
TANAGRA	23,57	38,33	9,8	14,3	5,2	21	122
HIOS	26,13	38,35	11,1	14,1	8,7	20	163
PYRGOS	21,42	37,67					
TRIPOLI	22,40	37,52	7,2	12,4	1,6	25	132
TATOI	23,78	38,10	8,9	13,5	4,3	24	
HELLINIKO	23,73	37,90	11,4	14,9	8	6	119
ELEYSINA	23,55	38,07	10,7	15,1	6,1	21	
ZAKYNTHOS	20,88	37,75	12,3	16	8,8	19	150
SAMOS	26,92	37,68					
ARGOS	22,75	37,63					
KALAMATA	22,02	37,07	11,4	17,2	6,3	37	137
NAXOS	25,37	37,10	13	15,3	10,9	5	146
METHONI	21,70	36,82					
MHLOS	24,43	36,73					
SPATA	23,95	37,95	11,1	14,4	6,3	22	
KOS	27,08	36,80	11,7	14,4	9,2	94	
KYTHIRA	22,98	36,15					
SANTORINI	25,41	36,41	13,1	15,5	10,8	23	164
SOUDA	24,12	35,55	11,8	15,2	8,7	148	134
RODOS	28,08	36,40					
MYKONOS	25,35	37,43	11,8	14	10,3	4	
HRAKLEIO	25,18	35,33	12,9	16,1	10	8	144
IERAPETRA	25,73	35,02					
SITEIA	26,10	35,21					
RETHYMNO	24,50	35,36					
TYMPAKI	24,76	35,06					
KASTELI	25,33	35,18	10	13,7	5,9	20	149
KARPATIOS	27,15	35,42	13,8	16,1	11,9	31	
PAROS	25,13	37,02	12,4	14,6	10,4	9	154
SYROS	24,95	37,42	12	14,7	10,1	10	173
IKARIA	26,35	37,68					

**TABLE OF DEVIATIONS
FROM NORMAL VALUES**

STATION	TMEAN (deviation) (I)	PRECI (deviation %) (II)
SERRES	1.7	71
FLORINA		
THESSALONIKI	2.1	60
ALEXANDROUPOLI	1.6	90
KOZANI	2.7	95
KERKYRA	1.8	38
IOANNINA	1.4	43
LARISA	1.6	69
LIMNOS	1.4	143
AGHIALOS		
MYTILINI	1.1	37
AGRINIO		
SKYROS	0.6	36
ARGOSTOLI	1	14
ARAXOS	1.3	49
HIOS	1.3	24
HELLINIKO	0.9	13
ZAKYNTHOS	0.8	17
SAMOS		
KALAMATA	0.7	36
NAXOS	0.9	9
METHONI		
SANTORINI	1.9	38
SOUDA	0.7	132
RODOS		
HERAKLIO	0.7	10
SITIA		

(I) deviation of mean temperature from normal values
(II) deviation of monthly precipitation height from normal values %.

Climatic Bulletin

General Description

Precipitation amounts were lower enough than normals over most parts (mainly over Cyclades and eastern Aegean islands) while they were higher enough over Iperus and Creta. The mean temperature varied higher than normal values everywhere.

Climatic Parameters :

- ❖ **Normal Values** : normal values for various parameters (temperature, precipitation, etc) are defined as mean values calculated for 30 years. These normal values are used as basis and represent the mean situation. They can be specified in 10 daily, monthly, seasonally and yearly level and are used for the trend comparison of 10 days, month, season or year as: rainy decameron, mild winter, cool August etc.

Measurement :

- ❖ **Precipitation**
1 mm = 1 litre/m²

Table Legend :

Tmean : Mean Temperature
 TN : Minimum Temperature
 TX : Maximum Temperature
 RR : Precipitation height(mm)
 INST : Sun Duration (hours)

UTC hours (Universal Time Coordinates) in Greece :

- ❖ Winter : UTC hour = local hour - 2
- ❖ Summer : UTC hour = local hour - 3

© Hellenic National Meteorological Service
 Reproduction is prohibited without written authorization
 14 El.Venizelou 16777
 Helliniko, Athens
 Greece