




# Climatic Bulletin

March 2014

 **Max  
temperature**

 **Min  
temperature**

 **Mean  
temperature**

 **Precipitation**

 **Sunshine  
duration**

The main characteristic of March was the variation of temperature and alternation of North and South winds, mostly of gale force. Significant thunderstorms recorded mainly over west, central and northern mainland.



ΕΘΝΙΚΗ  
**ΜΕΤΕΩΡΟΛΟΓΙΚΗ**  
ΥΠΗΡΕΣΙΑ

HELLENIC NATIONAL METEOROLOGICAL SERVICE



# Temperature

### First Decameron

**Minimum:**

More specific (from the lowest) :  
 -3.1°C in Florina, -1.2°C in Kastoria at 4/3.

**Maximum:**

More specific (from the highest):  
 16.2°C in Thessaloniki,  
 19.6°C in Iraklio at 4/3.

### Second Decameron

**Minimum:**

More specific (from the lowest) :  
 -1.5°C in Ioannina at 12/3,  
 -3.9°C in Florina, -1.9°C in Tripoli at 14/3.

**Maximum:**

More specific (from the highest):  
 25.7°C in Konitsa, 26.2°C in Astros at 18/3,  
 26.1°C in Lamia at 19/3.

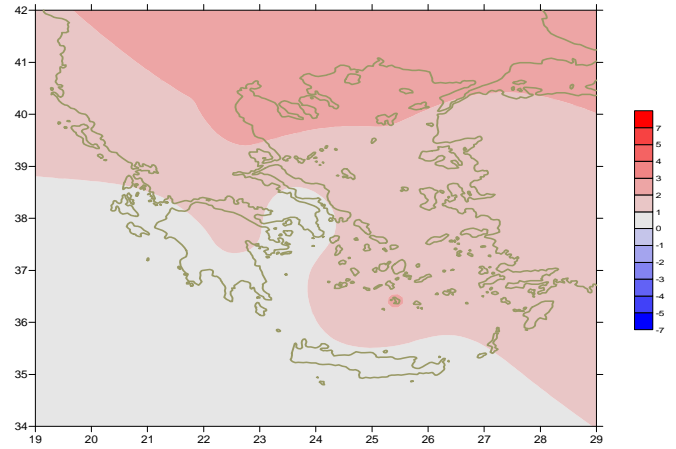
### Third Decameron

**Minimum:**

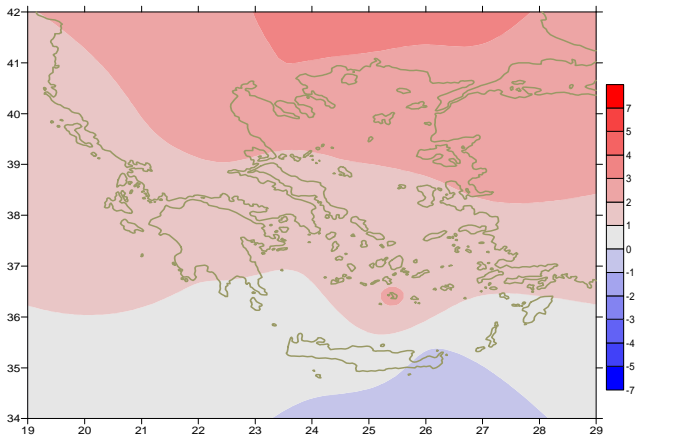
More specific (from the lowest) :  
 -2.2°C in Florina at 21/3, -1°C in Tripoli at 31/3.

**Maximum:**

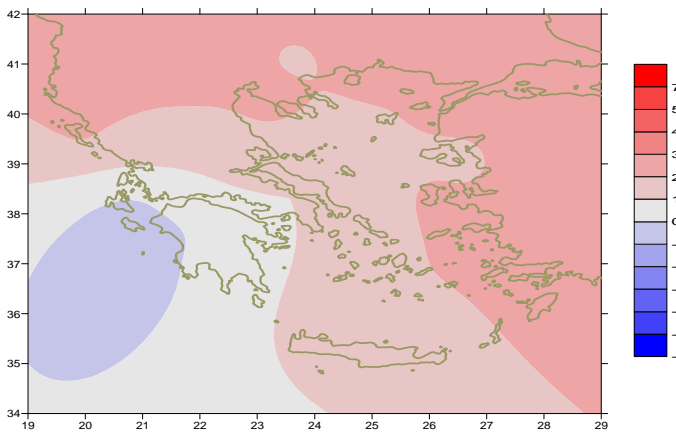
More specific (from the highest):  
 22.7°C in Konitsa, 21.8°C in Kolimvitirio(Athens) at 21/3,  
 24.2°C in Serres at 22/3.



*Deviation of mean temperature from normal values*



*Deviation of maximum temperature from normal values*



*Deviation of minimum temperature from normal values*



## Precipitation

### First Decameron

Significant local rainfalls .

More specific:

*35mm in Edessa at 2/3,  
41mm in Chrisoupoli, 67mm in Kalamata at 3/3,  
36mm in Mitilini, 35mm in Rodos at 5/3,  
39mm in Limnos at 7/3.*

### Second Decameron

Local rainfalls.

More specific:

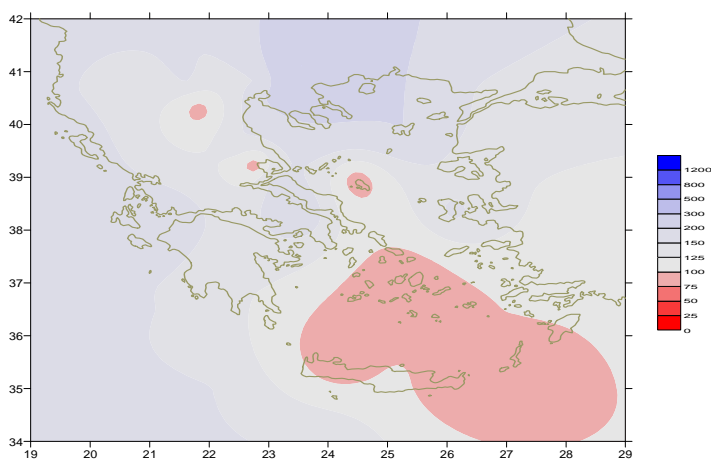
*7mm in Larissa, 7mm in Methoni,  
9mm in Kastelli at 11/3,  
7mm in Souda at 17/3.*

### Third Decameron

Significant local rainfalls .

More specific:

*17mm in Konitsa at 24/3,  
26mm in Preveza at 26/3,  
21mm in Thessaloniki, 18mm in Kerkyra at 28/3.*



*Deviation of monthly precipitation  
height from normal values (%)*

TABLE OF MEAN VALUES

STATION	Longitude	Latitude	Tmean	TX	TN	RR	INST
SERRES	23,53	41,07	12,5	17,8	6	101	179
FLORINA	21,40	40,78					
KASTORIA	21,27	40,45	9,1	15	2,2	52	183
TRIKALA_IMATHIAS	22,55	40,60					
THESSALONIKI	22,97	40,52	12,3	16,7	7	94	191
CHRYSOUPOLI	24,62	40,92	11,5	15,3	7,1	109	195
ALEXANDROUPOLI	25,95	40,85	10,8	15,2	6,4	82	180
KOZANI	21,83	40,28	9	14,2	4	36	
KERKYRA	19,92	39,62	13,5	17,4	9	136	174
IOANNINA	20,82	39,70					
PREVEZA	20,76	38,91	13,4	16,9	9,5	150	
TRIKALA_THESSALIAS	21,77	39,52					
LARISA	22,45	39,65	11,6	17,5	4,9	46	178
LIMNOS	25,23	39,92	12	15,6	8,1	102	204
ARTA	21,00	39,17					
AGHIALOS	22,78	39,21	11,9	16,6	6,5	43	207
MYTILINI	26,60	39,05	13,2	17,6	10	81	198
VELO	22,77	37,97					
AGRINIO	21,35	38,60					
LAMIA	22,43	38,87					
ANDRAVIDA	21,28	37,92	12,8	17,6	7,4	116	212
SKYROS	24,48	38,96	13,1	16	10,6	42	180
ARGOSTOLI	20,50	38,12					
ARAXOS	21,42	38,15	13,2	17,2	7,9	103	224
TANAGRA	23,57	38,33	11	16	5,6	75	195
HIOS	26,13	38,35	13,3	16,4	9,5	116	214
PYRGOS	21,42	37,67					
TRIPOLI	22,40	37,52	9,2	14,5	2,8	76	207
TATOI	23,78	38,10	11,7	16	6,2	61	
HELLINIKO	23,73	37,90					
ELEYSINA	23,55	38,07	13,1	17,7	8	57	
ZAKYNTHOS	20,88	37,75	13,4	17,9	8,2	143	212
SAMOS	26,92	37,68					
ARGOS	22,75	37,63					
KALAMATA	22,02	37,07	12,8	18,4	7,1	98	229
NAXOS	25,37	37,10	14,5	16,7	12	29	221
METHONI	21,70	36,82					
MHLOS	24,43	36,73					
SPATA	23,95	37,95	13	16,4	7,9	73	
KOS	27,08	36,80	13,9	16,6	11,2	86	
KYTHIRA	22,98	36,15					
SANTORINI	25,41	36,41	14,9	17,4	12	42	230
SOUDA	24,12	35,55	13,5	16,9	10,1	44	228
RODOS	28,08	36,40	15,4	17,9	12,7	77	229
MYKONOS	25,35	37,43	13,5	15,7	12,3	60	
HERAKLEIO	25,18	35,33	14,4	17,4	11	60	191
IERAPETRA	25,73	35,02					
SITEIA	26,10	35,21	14,1	16,8	11,5	32	190
RETHYMNO	24,50	35,36					
TYMPAKI	24,76	35,06					
KASTEI	25,33	35,18	12	15,6	8,1	99	190
KARPATOS	27,15	35,42	16	16,9	13,8	0	
PAROS	25,13	37,02					
SYROS	24,95	37,42	14	16,8	11,2	38	232
IKARIA	26,35	37,68	15,3	17,3	13,4	223	

TABLE OF DEVIATIONS  
FROM NORMAL VALUES

STATION	TMEAN ( deviation ) (I)	PRECI ( deviation % ) (II)
SERRES	2.8	305
FLORINA		
THESSALONIKI	2.7	206
ALEXANDROUPOLI	2.3	157
KOZANI	2	86
KERKYRA	1.4	138
IOANNINA		
LARISA	2.1	127
LIMNOS	2.1	198
AGHIALOS	1.9	82
MYTILINI	2.1	108
AGRINIO		
SKYROS	1.4	82
ARGOSTOLI		
ARAXOS	0.9	173
HIOS	1.5	158
HELLINIKO		
ZAKYNTHOS	0.5	160
SAMOS		
KALAMATA	0.4	136
NAXOS	1.2	58
METHONI		
SANTORINI	2.2	70
SOUDA	0.9	55
RODOS	1.8	102
HERAKLIO	0.8	105
SITIA	0.3	57

(I) deviation of mean temperature from normal values

(II) deviation of monthly precipitation height from normal values %.

# Climatic Bulletin

## General Description

Precipitation amounts were higher than normal values everywhere with exception of Central and South Aegean area where they were lower. The mean temperature varied higher than normal values over every part of Greece.

### Climatic Parameters :

- ❖ **Normal Values** : normal values for various parameters (temperature, precipitation, etc) are defined as mean values calculated for 30 years. These normal values are used as basis and represent the mean situation. They can be specified in 10 daily, monthly, seasonally and yearly level and are used for the trend comparison of 10 days, month, season or year as: rainy decameron, mild winter, cool August etc.

### Measurement :

- ❖ **Precipitation**  
1 mm = 1 litre/m<sup>2</sup>

### Table Legend :

Tmean : Mean Temperature  
 TN : Minimum Temperature  
 TX : Maximum Temperature  
 RR : Precipitation height(mm)  
 INST : Sun Duration (hours)

### UTC hours (Universal Time Coordinates) in Greece :

- ❖ Winter : UTC hour = local hour - 2
- ❖ Summer : UTC hour = local hour - 3

© Hellenic National Meteorological Service  
 Reproduction is prohibited without written authorization  
 14 El.Venizelou 16777  
 Helliniko, Athens  
 Greece