




Climatic Bulletin

February 2012

 **Max
temperature**

 **Min
temperature**

 **Mean
temperature**

 **Precipitation**

 **Sunshine
duration**



February characterized by great variations of temperature and alternation in wind direction. Also, the wind force exceeded 8 Beaufort for a long time. Meanwhile heavy snowfalls and strong rainfalls recorded (severe floods in Pyrgos). Also, hails recorded locally over southern parts while frost conditions prevailed over Central and Northern mainland.



ΕΘΝΙΚΗ
ΜΕΤΕΩΡΟΛΟΓΙΚΗ
ΥΠΗΡΕΣΙΑ

HELLENIC NATIONAL METEOROLOGICAL SERVICE



Temperature

First Decameron

Minimum: the lowest values over Northwestern mainland.

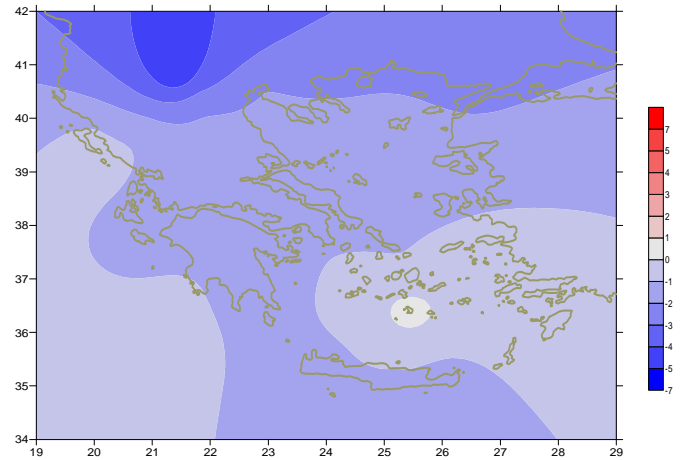
More specific:

-16.5°C in Florina and -10.1°C in Kastoria at 1/2.

Maximum: total frost conditions locally over north mainland.

More specific (max):

-4.4°C in Kozani at 7/2, -1.8°C in Alexandroupoli at 8/2, -4.7°C in Florina at 8/2, -0.9°C in Edessa at 8/2.



Deviation of mean temperature from normal values

Second Decameron

Minimum: low values over central and southern parts, as well.

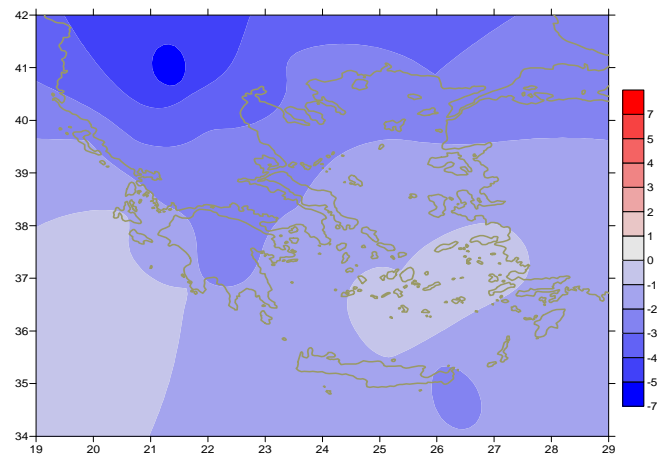
More specific:

-6.8°C in Tripoli, -4.5°C in Argos and -2°C in Hellinikon at 18/2.

Maximum: the values declined rapidly between 17-18/2 over eastern and southern parts.

More specific:

7.1°C in Spata (airport), 5.4°C in Mykonos and 5.2°C in Mytilini at 17/2.



Deviation of maximum temperature from normal values

Third Decameron

Minimum: temporal rising values from 25/2 mainly over southern parts.

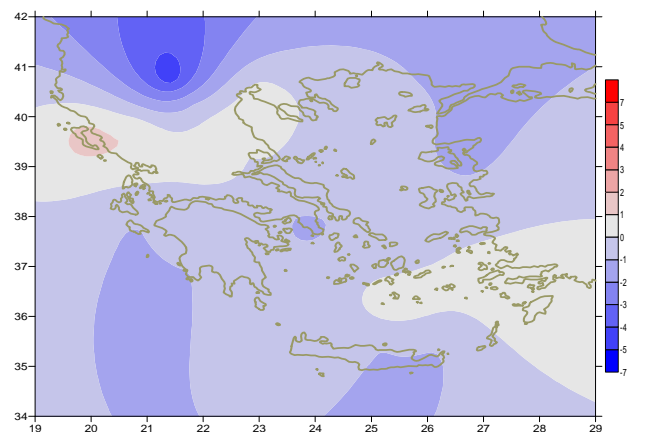
More specific (from the highest):

1°C in Astros, 11.8°C in Samos, 12.2°C in Naxos and 13.4°C in Santorini at 27/2.

Maximum: very high values at the end.

For example:

22.1°C in Serres, 21.6°C in Larisa, 19.1°C in N. Filadelfia at 25/2.



Deviation of minimum temperature from normal values



P r e c i p i t a t i o n

First Decameron

Heavy snowfalls over west, central and north mainland,

Significant rainfalls (which caused local damages) over southern parts.

More specific:

62mm in Zakynthos at 2/2,

151mm in Pyrgos (Peloponnese) at 5/2,

47mm in Chios at 7/2, 81mm in Skyros at 8/2.

Second Decameron

High precipitation amounts mainly (strong rainfalls, local thunderstorms with hail).

More specific:

41mm in Kerkyra, 24mm in Agrinio at 11/2,

46mm in Elefsina at 12/2, 23mm in Rodos at 17/2.

Third Decameron

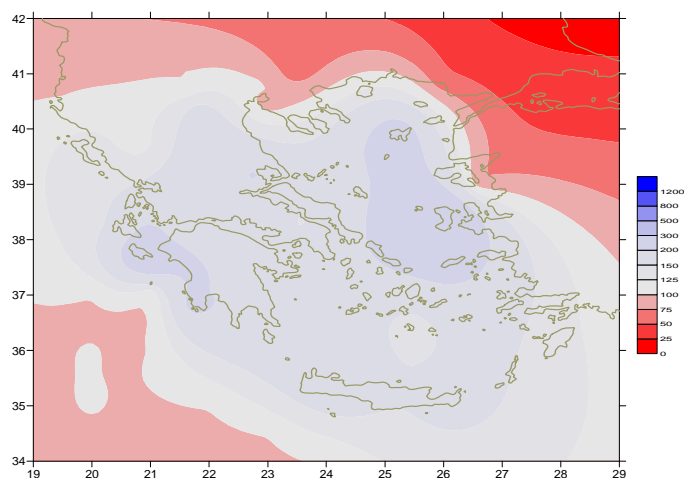
Very high precipitation amounts (rainfalls, snowfalls over Central and Southern area.

More specific:

28mm in Iraklion at 23/2, 46mm in Samos at 28/2,

34mm in Kastelli at 28/2,

57mm in Paros at 28/2.



Deviation of monthly precipitation height from normal values (%)

TABLE OF MEAN VALUES

STATION	Longitude	Lattitude	Tmean	TX	TN	RR	INST
SERRES	23,53	41,07	3,7	7,8	-0,9	25	73
FLORINA	21,40	40,78	-2,1	2	-6,4	66	62
KASTORIA	21,27	40,45	0,7	4,4	-3,6	147	84
TRIKALA_IMATHIAS	22,55	40,60					
THESSALONIKI	22,97	40,52	4,7	7,6	1,6	32	93
CHRYSOUPOLI	24,62	40,92	4,6	7,6	1,3	111	102
ALEXANDROUPOLI	25,95	40,85	3,4	6,6	0	37	121
KOZANI	21,83	40,28	1,3	4,6	-2,4	55	
KERKYRA	19,92	39,62	9,6	12,2	6,5	192	84
IOANNINA	20,82	39,70	4,9	8,6	1,1	133	72
PREVEZA	20,76	38,91	8,9	11,8	6,1	152	
TRIKALA_THESSALIAS	21,77	39,52					
LARISA	22,45	39,65	5,1	8,9	1,3	60	84
LIMNOS	25,23	39,92	6,3	8,7	3,7	107	89
ARTA	21,00	39,17					
AGHIALOS	22,78	39,21	6,1	9,6	2,7	104	83
MYTILINI	26,60	39,05	8,1	10,9	5,3	75	106
VELO	22,77	37,97					
AGRINIO	21,35	38,60	7,8	12	3,3	212	98
LAMIA	22,43	38,87					
ANDRAVIDA	21,28	37,92	9,1	12,8	5,3	228	109
SKYROS	24,48	38,96	8,6	10,9	6,4	113	85
ARGOSTOLI	20,50	38,12	10,5	13,5	7,8	187	122
ARAXOS	21,42	38,15	9,2	12,4	5,7	152	108
TANAGRA	23,57	38,33	6,8	10,6	3	78	96
HIOS	26,13	38,35	8,6	11,5	5,8	256	124
PYRGOS	21,42	37,67	9,6	12,9	5,7	388	49
TRIPOLI	22,40	37,52					
TATOI	23,78	38,10	6,8	10,1	3,5	102	
HELLINIKO	23,73	37,90	9,4	12,4	5,8	82	91
ELEYSINA	23,55	38,07	8,5	11,9	5,4	108	
ZAKYNTHOS	20,88	37,75	10,1	13,2	7,1	337	79
SAMOS	26,92	37,68	9,5	12,4	6,7	194	
ARGOS	22,75	37,63					
KALAMATA	22,02	37,07	9	13,2	5,2	203	113
NAXOS	25,37	37,10	11,2	13,4	8,7	105	118
METHONI	21,70	36,82	10,8	13,8	6,7	178	133
MHLOS	24,43	36,73					
SPATA	23,95	37,95	7,6	11,3	4	61	
KOS	27,08	36,80	10,3	12,7	8,1	176	
KYTHIRA	22,98	36,15					
SANTORINI	25,41	36,41	11,7	13,5	10	80	159
SOUDA	24,12	35,55	9,9	13,3	7	228	116
RODOS	28,08	36,40	11,6	14	9,4	154	157
MYKONOS	25,35	37,43	9,9	11,9	8,4	116	
HERAKLEIO	25,18	35,33	11,2	14,4	8	117	139
IERAPETRA	25,73	35,02					
SITEIA	26,10	35,21	11	13,5	8,3	126	134
RETHYMNO	24,50	35,36					
TYMPAKI	24,76	35,06	10,9	15	5,9	162	168
KASTELI	25,33	35,18	8,2	11,9	4,6	172	133
KARPATOS	27,15	35,42					
PAROS	25,13	37,02	10,8	13,2	8,3	101	142
SYROS	24,95	37,42	10,5	12,9	8,1	80	132
IKARIA	26,35	37,68	10,7	12,2	9,6	146	

TABLE OF DEVIATIONS
FROM NORMAL VALUES

STATION	TMEAN (deviation) (I)	PRECI (deviation %) (II)
SERRES	-2.6	60.0
FLORINA	-4.9	115.0
THESSALONIKI	-2.0	80.0
ALEXANDROUPOLI	-2.4	60.5
KOZANI	-2.3	171.5
KERKYRA	-0.7	141.1
IOANNINA	-1.2	115.2
LARISA	-1.7	171.9
LIMNOS	-1.6	242.6
AGHIALOS	-1.5	203.9
MYTILINI	-1.7	77.2
AGRINIO	-1.4	178.0
SKYROS	-1.6	178.8
ARGOSTOLI	-1.2	165.2
ARAXOS	-1.3	178.0
HIOS	-1.2	303.6
HELLINIKO	-1.1	171.5
ZAKYNTHOS	-1.4	298.8
SAMOS	-0.5	188.7
KALAMATA	-1.7	199.0
NAXOS	-0.9	179.2
METHONI	-0.7	217.1
SANTORINI	+0.5	131.6
SOUDA	-1.2	202.8
RODOS	-0.4	130.8
HERAKLIO	-1.0	151.2
SITIA	-1.4	167.3

(I) deviation of mean temperature from normal values
(II) deviation of monthly precipitation height from normal values %.

Climatic Bulletin

General Description

Precipitation amounts were higher than normal values mainly over Eastern parts of Greece.
The mean temperature varied lower than normal values over Greek mainland and islands.

Climatic Parameters :

- ❖ **Normal Values** : normal values for various parameters (temperature, precipitation, etc) are defined as mean values calculated for 30 years. These normal values are used as basis and represent the mean situation. They can be specified in 10 daily, monthly, seasonally and yearly level and are used for the trend comparison of 10 days, month, season or year as: rainy decameron, mild winter, cool August etc.

Measurement :

- ❖ **Precipitation**
1 mm = 1 litre/m²

Table Legend :

Tmean : Mean Temperature
TN : Minimum Temperature
TX : Maximum Temperature
RR : Precipitation height(mm)
INST : Sun Duration (hours)

UTC hours (Universal Time Coordinates) in Greece :

- ❖ Winter : UTC hour = local hour - 2
- ❖ Summer : UTC hour = local hour - 3

© Hellenic National Meteorological Service
Reproduction is prohibited without written authorization
14 El.Venizelou 16777
Helliniko, Athens
Greece